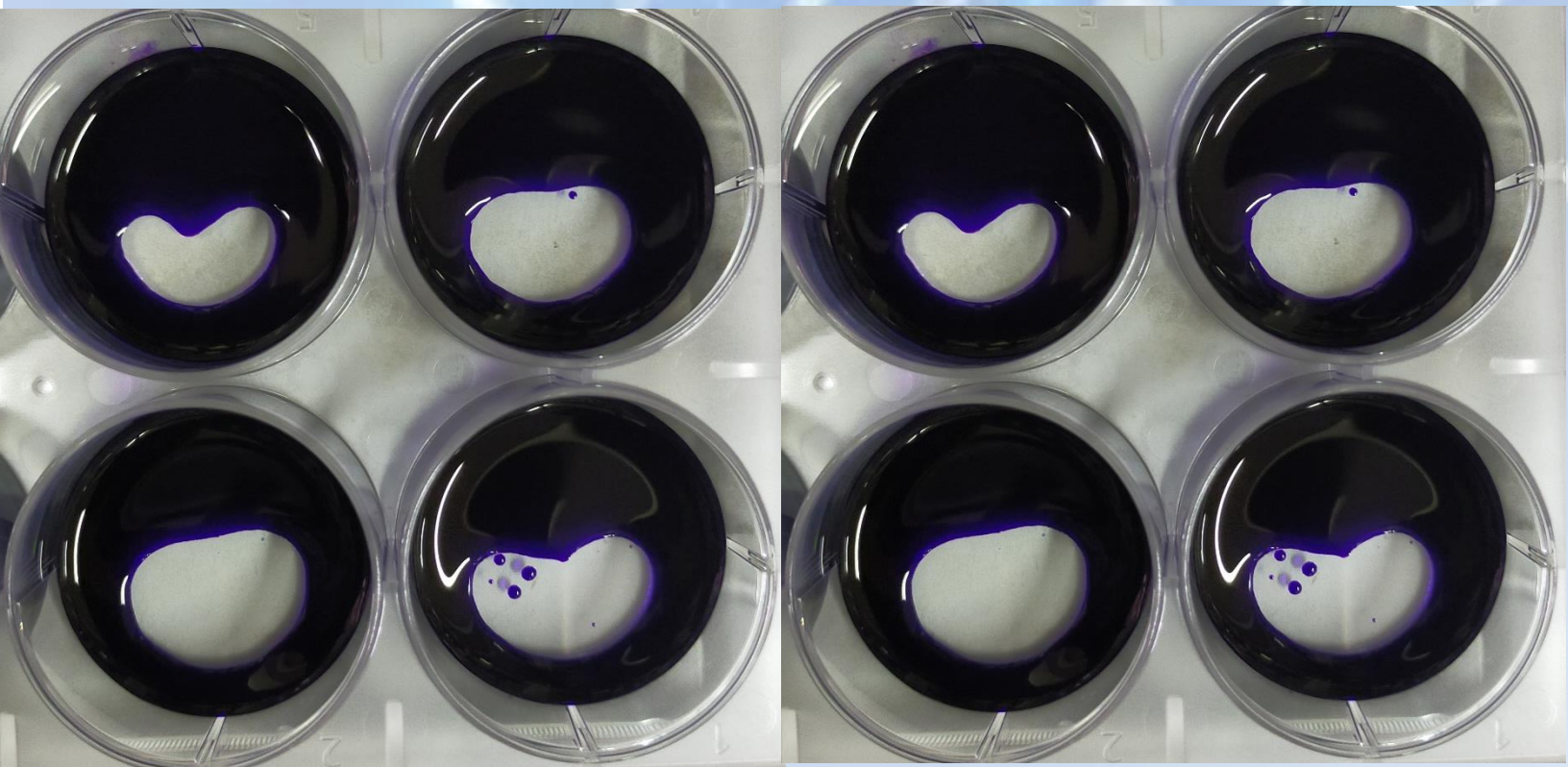


Dutt and Shilpee Lab

NEWSLETTER

July 2021



"Little hearts"

COURTESY: TEJASHREE MAHADALKAR

PROMOTION



Their hard work and dedicated efforts have truly been outstanding. We wish Amit Sir, Shailesh Sir and Smita ma'am all the very best as they climb a step up in their work journey at ACTREC.

congratulations

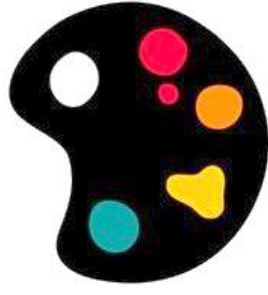
HAPPY
BIRTHDAY



We Will
Miss
You



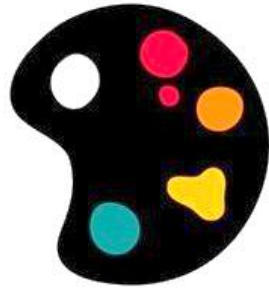
FAREWELL



THE CREATIVE CORNER



“देख असर खुशबू का, सारे जहां पे
कली चल पड़ी, फूलों के नक्श-ए-पा पे”
सुहैल अहमद "शाद"



THE CREATIVE CORNER



"Like an echo in the forest, the day will come back around as if nothing happened"- Life goes on, BTS

Courtesy: Roma Sunder

In conversation with...

General Facts

1. By birth, my name is: Miss Smita Pokharankar
2. Pals call me: Shimi
3. I was born on: 16/03/1970
4. My childhood was spent at: Mumbai



Personal Life

1. Can you describe any one ever-lasting memory about your childhood?

Childhood remains the most joyful journey of my life. There are many memories. My native place is Konkan and we have a house in a typical village near Malvan. We used to go there at the time of summer holidays and for Ganpati Festival. Those days are everlasting memory with my grandparents and my cousins. Listening to the stories from grandfather, running around the village, playing with cousins and eating mangoes till our stomachs gets full are some of them that I will always cherish.

2. As a child, what did you aspire to become in life? Any reasons associated with it?

Like most of the children, I also dreamt of becoming a doctor. As I was always interested in science and Biology in particular, I used to represent my school in science exhibitions. However, after 12th (HSC), I couldn't get admission into a medical school. But still wanted to be in the same field. So, I opted for Microbiology and then completed DMLT and MSc. In Biotechnology.

3. Would you like to state a person or an event that has inspired/influenced your life?

According to me, every person we meet in this journey of life has the ability to influence us in some way or the other. My parents are my biggest inspiration. My father is smart, kind, hard-working. He has been a pillar of support for me. He would always encourage me and help me whenever I need. My mother is a constant inspiration for her kind nature and the way she has shaped me with her values and morals (Sanskar), and My Husband for his hard work, dedication, commitment and his ability to handle situations in a positive way with a cool mind.

Apart from that, I have had an enormous influence on my life from my teachers from both school and college.

4. Do you have any hobbies or passion apart from research?

Reading books, cooking and helping others in the best possible way.

Lab journey

5. How would you say your life changed after joining Shilpee lab?

My experience so far has been completely a learning journey. I have gained experience in learning and understanding various different experiments, how to multitask and organize your schedule. I have always wanted to take up certain qualities from people around me. The people around me are so positive and so helpful. Each person in the lab has a different personality and I learn so many things from each one of them on a daily basis at the professional front.

6. Can you share your experience of working closely on a project you found most interesting?

I was working with Sameer on GCN5 project. It was really good learning experience for me. I learned how to plan/design the experiments and to do them with perfection.

7. Since you have been an integral part of the lab for quite a long time, how would you say the lab has evolved/grown over the years?

I joined Shilpee Lab on 1st October 2011 almost 10 years back. At the time there was only one student in the lab and three trainees with very limited space and equipments. Over the years, with Shilpee Madam's knowledge of science and her experience we received many grants. We are now a well-equipped lab with all the necessary instruments and sufficient funds also to carry out high throughput approaches such as transcriptomics and proteomics. Students, JRFs as well as trainees who have been a part of the lab are also doing well in their career. Shilpee madam's passion towards work and her enthusiasm for motivating the students and trainees in lab has resulted in multiple high impact publications of our work in peer reviewed journals and international recognition for the lab. I am happy to be part of this lab and wish for it to get more success in future.